



# Style Chart and Measuring

## Styles in Chrome



**H= Hex Caps  
Chrome Plated**



**S= Allen Screws  
Chrome Plated**



**B= Button Head  
Chrome Plated**

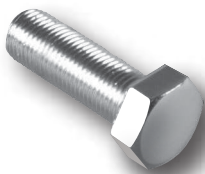


**N= 12 Point  
Chrome Plated**



**P= Allen Screws  
Polished Chrome Plated**

## Styles in Stainless Steel



**HS= Hex Bolts  
Stainless Steel**



**SS= Allen Screws  
Stainless Steel**



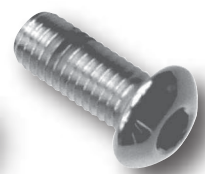
**SB= Button Head  
Stainless Steel**



**HSP= Hex Bolts  
Stainless Steel  
Polished**



**SSP= Allen Screws  
Stainless Steel  
Polished**



**SBP= Button Head  
Stainless Steel  
Polished**



Round



Flat



Truss



Oval



Pan



Fillister



Hex



Acorn Nut  
and Slotted Stud  
Kits



Sheet Metal  
Screw

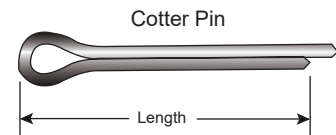
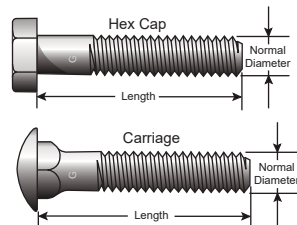
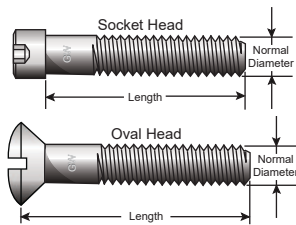
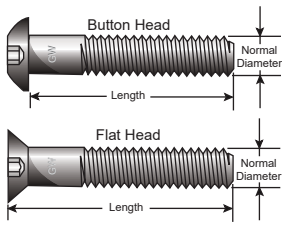


Wood Screw



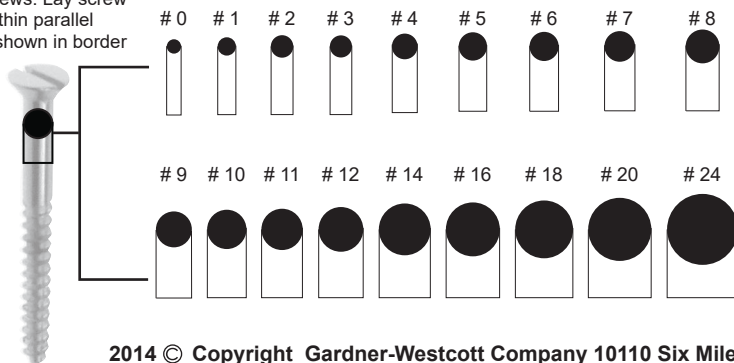
Machine Screw

## How to Measure



## Actual Shank Sizes

To Determine Sizes of Screws. Lay screw flat within parallel lines shown in border



## Bolt Gage

Combined American and Metric gage to measure bolts, nuts and screws is an every day necessity to the dealer. These gages are available and can be ordered by **Part # gage**

